

Construction Updates



Emperium Resortico

As of 1 September, 2025

2.0

GATE & ENTRANCE PLAZA



1.0

GATE & ENTRANCE PLAZA



Completed and Handed over to Facility
Water fountains in operation

2.1-VILLA NO-(222&225)(MAXBOND)

Villa 222&225

FOOTING PCC & LAYOUT WIP



2.2-VILLA NO.(184&185)(NEW ERA)

Villa-184&185

VILLA EXCAVATION & LAYOUT
WIP



3.0-17MTR ROAD(PATHWAYS PAVER WORKS)

STREET-17M

CENTRAL AVENUE PATHWAYS PAVER
INSTALLATION WIP



3.1-STREET-01(PATHWAYS PAVER WORK)

STREET-01

PATHWAYS PAVER WORK COMPLETED



3.2-STREET-02 (PATHWAYS PAVER WORK)

STREET-02

PATHWAYS PAVER & CHAMBER COVER FRAME
FIXING WIP



3.3-STREET-03(BLACK TOP WORKS)

STREET-03

PATHWAYS PAVER INSTALLATION WIP



3.4-STREET-4(PATHWAY PAVER WORK)

STREET-04

PATHWAY PAVER INSTALLATION WIP



3.5-STREET-05(WBM WORK)

STREET-05 2ND LAYER WBM WIP



3.6-STREET-06(BLACK TOP WORK)

STREET-06

ROAD CLEANING FOR EMULSION
TACK COATING WIP



3.7-STREET-07(BLACK TOP WORK)

STREET-07

ROAD CLEANING FOR EMULSION TACK
COATING WIP



3.8-12 MTR ROAD (WBM WORK)

STREET-12

2nd LAYER WBM WORK COMPLETED



3.9-17MTR PART-B ROAD (GSB LAYING WORKS)

STREET-17M

17M PART-B ROAD GSB & WBM LAYING
WORK IN PROGRESS



3.10-STREET-01A(PATHWAY PAVER WORK)

STREET-01A

PATHWAYS PAVER WORK COMPLETED



3.11-STREET-02A(BLACK TOP WORKS)

STREET-02A

PATHWAY PAVER WORK INSTALLATION
WIP



3.12-STREET-03A (PATHWAY PAVER WORK)

STREET-03A

PATHWAY PAVER INSTALLATION WIP



3.13-STREET-04A (BLACK TOP WORK)

STREET-04A

PATHWAY PAVER INSTALLATION
WIP



3.14-STREET-05A (PATHWAY SUBGRADE WORKS)

STREET-05A

PATHWAY ELECTRICAL PIPE
LAYING & SUBGRADE
PREPARATION WIP



3.15-STREET-06A(WBM LAYING WORK)

STREET-06A **PATHWAY ELECTRICAL PIPA LAYING**
WIP



3.16-STREET-07A (2ND LAYER WBM WORKS)

STREET-07A

PATHWAY ELECTRICAL PIPE LAYING &
CHAMBER PLASTER WIP



3.17-STREET-09 (SEWER & STORM LINE WORKS)

STREET-09

SEWER & STORM LINE MANHOLE PLASTER
WORK COMPLETED



3.18-STREET-10 (SEWER & STORM LINE WORKS)

STREET-10

SEWER & STORM LINE MANHOLE PLASTER
WORK IS COMPLETED



3.19-STREET-11 (SEWER & STORM LINE WORKS)

STREET-11

SEWER & STORM LINE MANHOLE OUTER
PLASTER WORK COMPLETED



3.20-STREET-12 (SEWER & STORM LINE WORKS)

STREET-12

SEWER & STORM LINE MANHOLE OUTER
PLASTER WORK IN PROGRESS



3.21-STREET-13 (SEWER MANHOLE WORKS)

STREET-13 SEWER LINE MANHOLE PLASTER WORK IN PROGRESS



3.22-STREET-14 (STORM LINE WORKS)

STREET-14 SUBGRADE PREPARATION WORK IN PORGRESS



3.23-STREET-15 (SEWER & STORM LINE WORKS)

STREET-15

SEWER & STORM LINE MANHOLE WORK
COMPLETED



4.1-(HORTICULTURE WORK)

WATER BODY SHRUBS PLANTED AT ENTRANCE



4.2-(BOUNDARY WALL SIDE ROAD WORK)

BOUNDARY WALL RIGHT ROAD PATHWAY
PAVER WIP



4.3-(FRONT AREA HORTICULTURE WORK)

FRONT AREA SHRUBS
PLANTED



FRONT AREA SHRUBS
PLANTED



4.4-(FRONT AREA HORTICULURE WORK)

**FRONT AREA CARPET GRASS LAYING
WORK COMPLETED**



4.5 (BOUNDARY WALL HORTICULTURE WORK)

**PARK 01 CARPET GRASS
LAYING WORK COMPLETE**



4.6 (I.G'S PLANTATION)

**IG PARK AREA HEDGE & PALM
PLANTATION WORK IN PROGRESS**



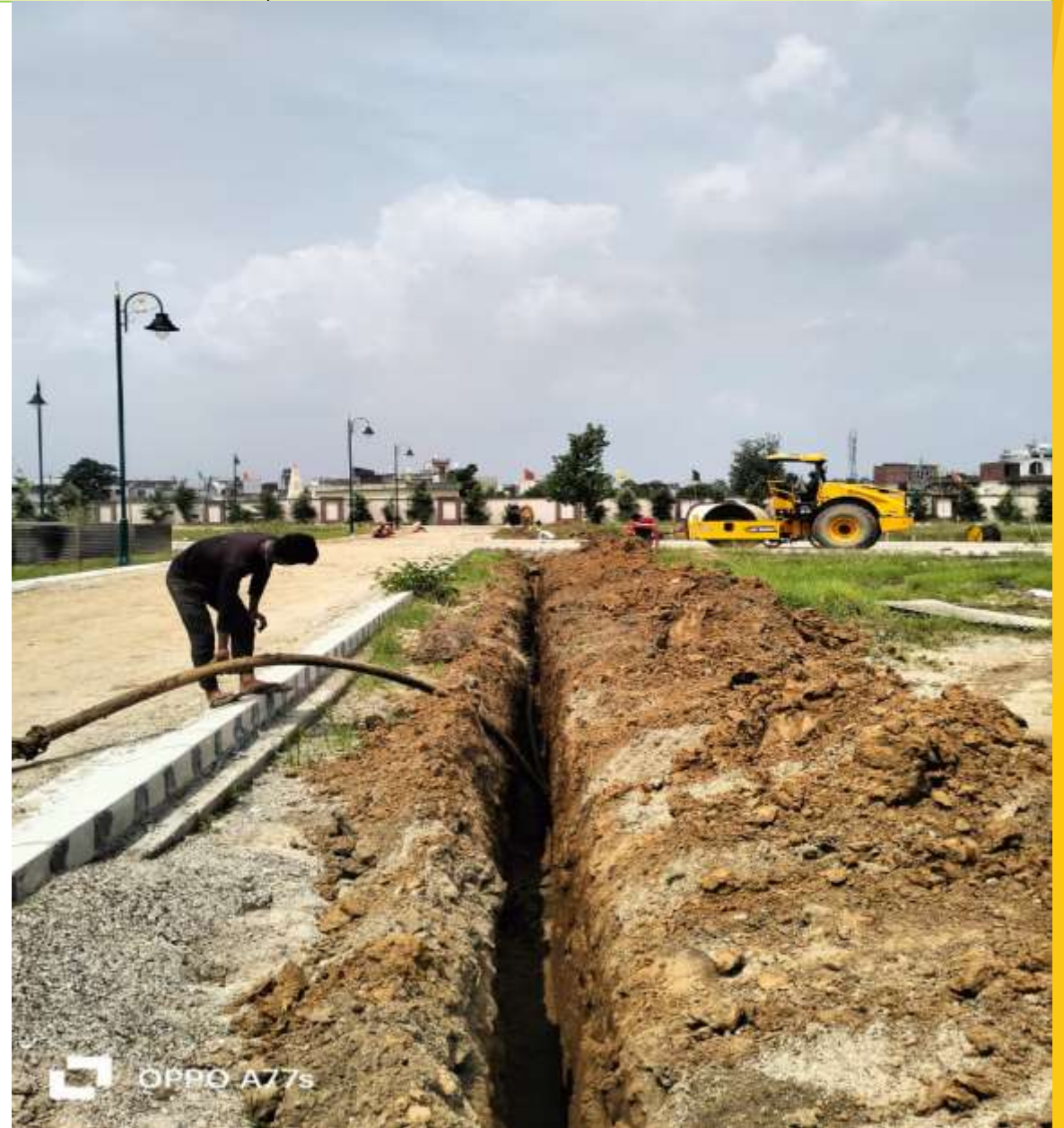
5.0(UGT SLAB PROTECTION LAYER CONCRETING WORK)

UGT SLAB TOP PROTECTION LAYER
CONCRETING WORK COMPLETED



6.0(ELECTRIFICATION WORK (REAL HEIGHT)

HT CABLE LAYING WIP (ESS-02 TO CLUB)



7.0 STP CONSTRUCTION (ASHAPURA)

STP EXCAVATION WORK & SHORING WORK IN PROGRESS



8.0- 45MTR PARK (HORTICULTURE WORKS)



9.0-SCO-01 (GSB LAYING WORK)

ROAD BASE PREPARATION WORK IN PROGRESS



10.-SCO-01(TOILET WORK)(MAXBOND)

SCO -01 TOILET FOOTING PCC WIP





EMPERIUM
BUILDING VALUES

Thank You

+91 7676769009

resorticosales@emperium.in

www.emperium.in

Yamunanagar Office: Emperium Resortico, Sector 33-34,
Near Buria Chowk, Yamuna Nagar, Haryana -135133